



GAT MONTHLY MEMBERSHIP PROGRESS REPORT

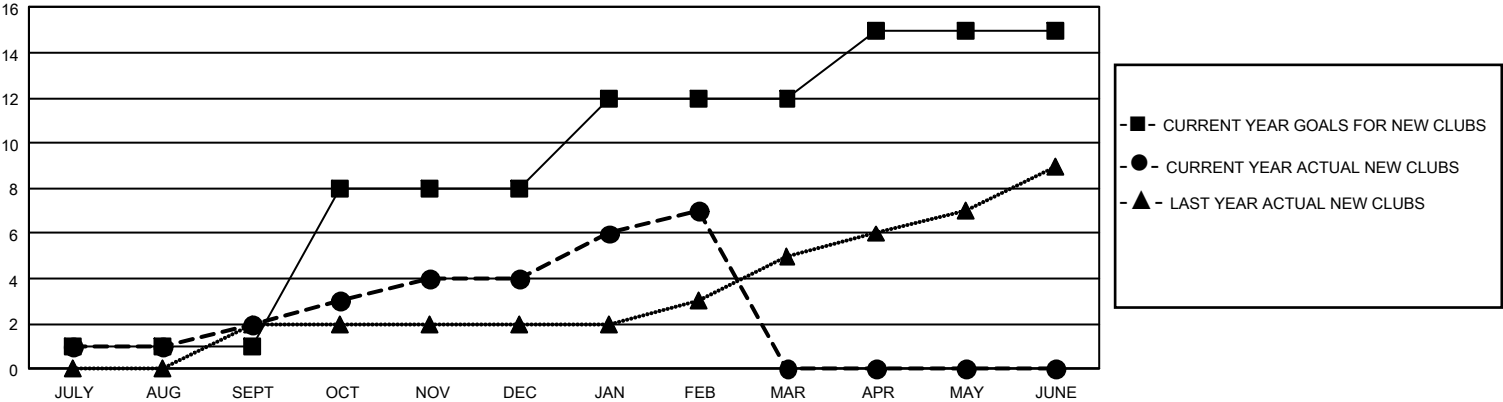
Results as of: 2/28/2025

GMT Constitutional Area 5 - J, Group I

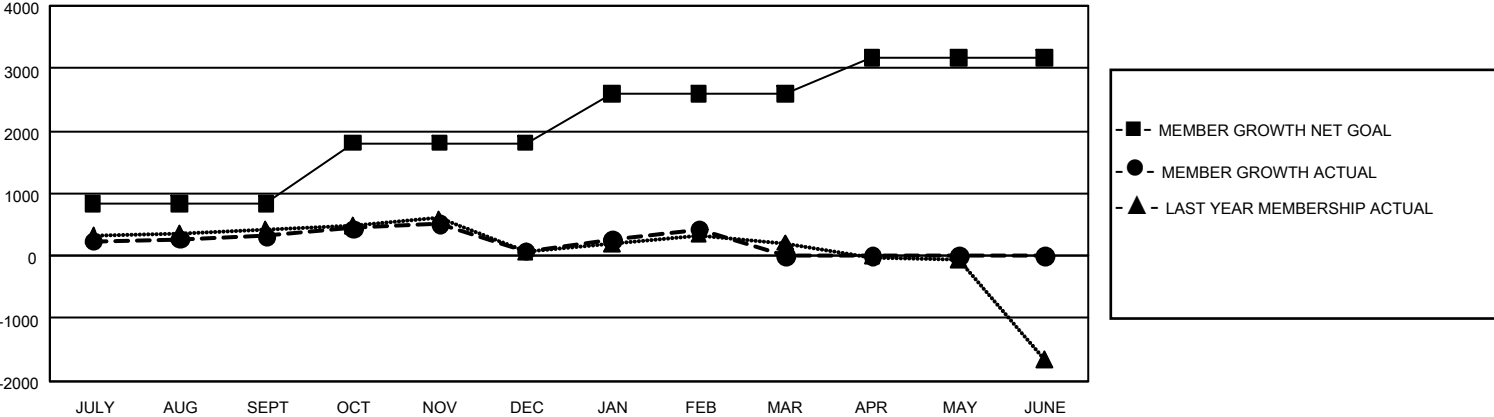
REPORT DOES NOT INCLUDE CLUBS IN UNDISTRICTED AREAS.

Clubs				Members			
RESULTS FOR 2024-2025				RESULTS FOR 2024-2025			
QUARTER	NEW CLUB GOAL	NEW CLUBS	DROPPED CLUBS	QUARTER	MEMBER GROWTH NET GOAL	MEMBER GROWTH ACTUAL	DROPPED MEMBERS ACTUAL (including transfers)
JULY/AUG/SEPT	3	2	1	JULY/AUG/SEPT	830	1,103	681
OCT/NOV/DEC	21	2	7	OCT/NOV/DEC	981	677	862
JAN/FEB/MAR	12	3	0	JAN/FEB/MAR	785	680	298
APR/MAY/JUNE	9	0	0	APR/MAY/JUNE	571	0	0

GOALS AND ACTUAL NEW CLUBS CUMULATIVE



GOALS AND ACTUAL MEMBERS CUMULATIVE



DROPPED CLUBS: 8		710 CLUBS OF 1,096 ADDED 1 OR MORE NEW MEMBERS	<u>GENDER DISTRIBUTION</u>	
<u>DROPPED MEMBERS</u>			MALE	30,269 (78.62%)
DECEASED	188	CLICK HERE FOR CUMULATIVE MEMBERSHIP DATA	FEMALE	8,224 (21.36%)
CLUB CANCELLED	2		NON BINARY	0 (0.00%)
OTHER	1,590		PREFER NOT TO ANSWER	7 (0.02%)
TOTAL	1,780		TOTAL FAMILY UNIT MEMBERS	0
			FAMILY MEMBERS PAYING HALF DUES	0